

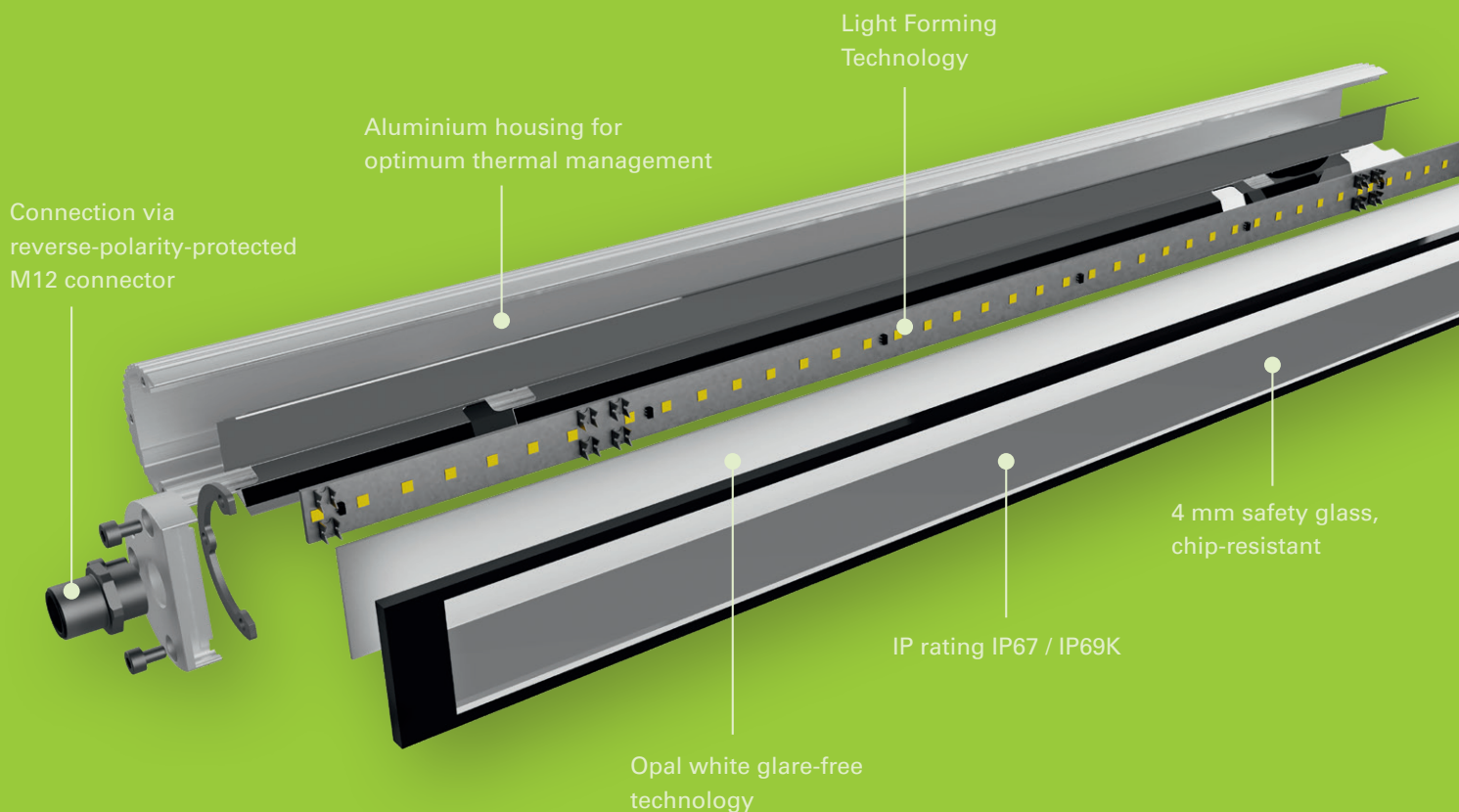
Product overview

LED industrial lighting

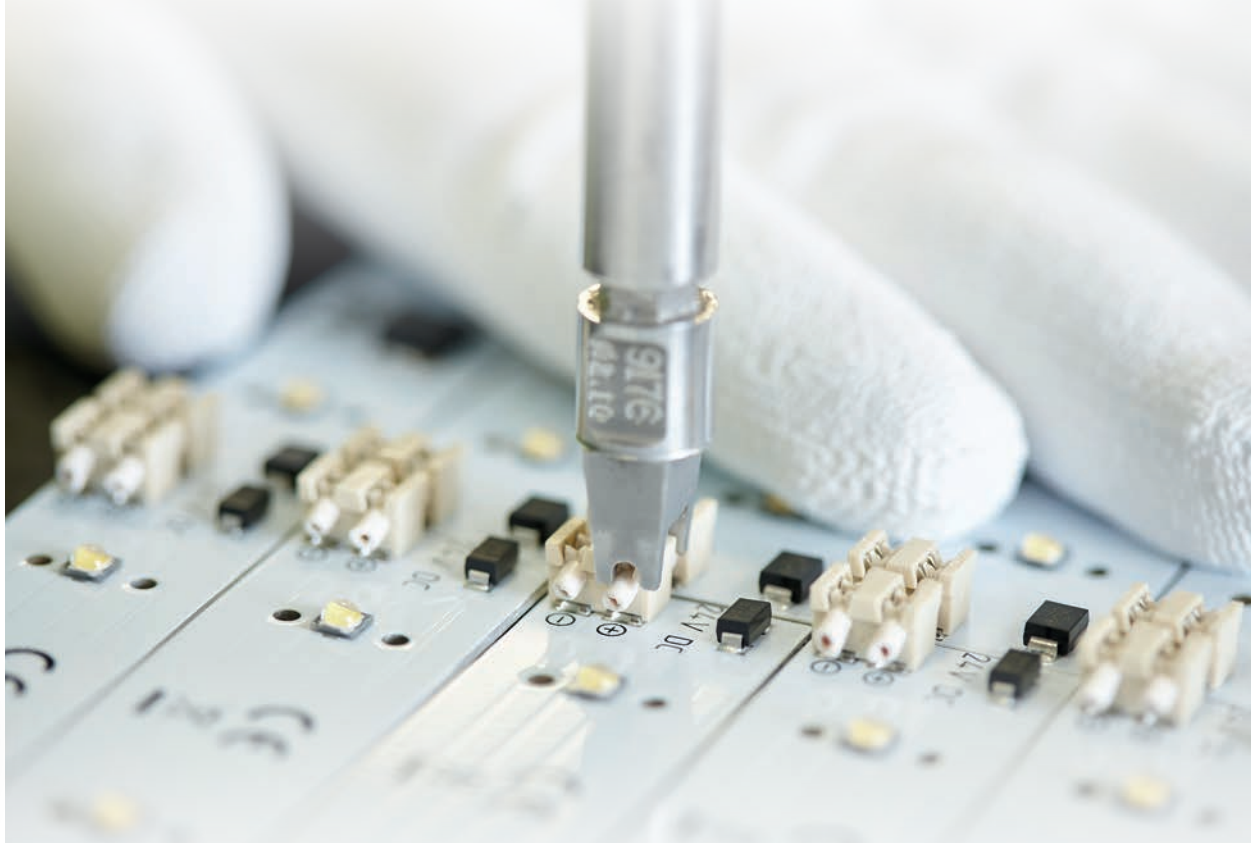
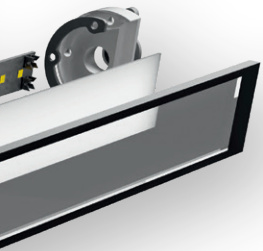
- For workplaces
- Machines & production plants
- Production lines
- Food&Beverages & Pharmaceutical
- Logistics & building technology
- Dental, medical and chemical laboratories
- Jewellery & watch industry

**LIGHTING
MADE
IN GERMANY**

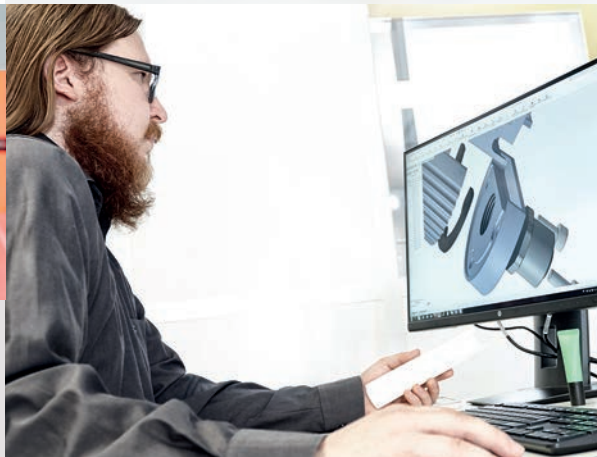
LED2WORK – Intelligence in Light



We are one of the pioneers in the LED industry and rank among the leading manufacturers of highly-specialised LED lights for workplace applications, machines and production plants. The durability of our products distinguishes us, as well as our constant pursuit to increase our lights' added value with innovative ideas. Our target is to take the conscious decision to utilise the possibilities offered by the properties of light and to convert these into products.



Luminaire Manufacturing MADE IN GERMANY: all components and assemblies are designed, mounted and tested in Germany.



Made in Germany

The requirements to be satisfied by products used in the commercial environment are highly complex. Hence, we influence the entire process chain with our lights.

Starting from the initial idea, to construction that includes practical tests, and right up to serial production. The benefit: an extremely high-quality range of industrial lights that creates standards in every application segment.

- Intelligent thermal light management
- Use of high-quality LEDs. This way, there are almost no deviations in colour temperature and brightness value
- Very high colour rendition (at least > Ra 98)
- 36 months warranty
- Maintenance-free lights



LED flex arm lights

The LED light CENALED SPOT Flexarm has a very flexible gooseneck and body that is also waterproof and oil-resistant, allowing integration into harsh production environments. In addition to the flexible arm variant, the CENALED SPOT is also available with an articulated arm and a swivel head variant.

Special features:

- High-quality flex arm, designed for > 33,333 bending cycles
- Once positioned, the arm remains firmly fixed in the desired position

Fields of application:

- Machines, manufacturing facilities, Assembly & workshop
- Dental, medical & chemical laboratories
- Jewellery & watch industry



LED workplace and flex arm lights

LED articulated arm lights are characterised by a stable, spring-loaded aluminium arm with a 3D head joint. This means that the light can be moved with millimetre precision, yet without any significant effort. By using a 3D head joint, the workplace is perfectly illuminated at any desired position.

Special features:

- Workplace lights with 2 different light colours or tunable white light changeable depending on time or situation
- Also possible with infinitely variable, flicker-free dimming
- Heat dissipation via the luminaire's rear - no risk of burns

Fields of application:

- Assembly & workshop
- Dental, medical & chemical laboratories
- Electronic, jewellery & watch industry

Now also available with



Variable colour temperature with natural colour rendering and excellent colour quality

LED workplace lighting

Our range of workplace lights is just as versatile as the variety of applications. Our workplace lights are sought after wherever excellent lighting conditions are required, and where precise, focussed light is crucial for quality. They enable good contrast vision with a very high degree of colour rendering. Ergonomic LED lights are available in different sizes and designs, depending on the respective application requirements.

- Homogeneous and shadow-free illumination of the work surface
- Glare and flicker-free lights
- Flicker-free dimming



LED system lights

Demanding visual tasks require optimum workplace illumination. Regardless of whether in the electronics, automotive or metal industry, in assembly or in the workshop - LED system lights are indispensable wherever excellent lighting conditions are needed so as to satisfy high quality requirements.

Special features:

- Compatible with many common system workstation lights using conventional technology
- UGR values < 22 according to the Industrial Workplace Directive
- Extremely wide product range available

Fields of application:

- Machines, production plants & assembly lines
- Manual, testing and assembly workstations

Now also available with

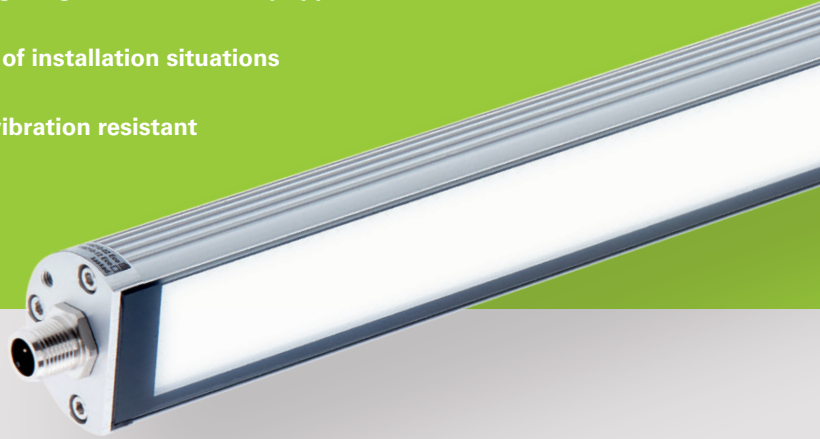


Variable colour temperature with natural colour rendering and excellent colour quality

LED machine lighting

The hallmarks of our LED industrial lights are robust aluminium housings, glare-free safety glass, and best quality seals for a high degree of protection. They have been developed for the most demanding and adverse operating conditions. Extreme temperatures, oil, water, hot chippings, cooling lubricants and emulsions have no impact on service life or luminosity. As a specialist, our product portfolio provides the right lighting solution for every application.

- Can be integrated into the tightest of installation situations
- Extremely robust and resistant
- The machine lights are shock and vibration resistant
- Electrically linkable



LED surface-mounted lights

Our LED surface-mounted lights are used for OEM original equipment as well as for retrofitting with all common machine types. Depending on the type of light, they are preferably used to illuminate large-volume plants and machines. The spotlights demonstrate their strength in confined or extremely limited spaces, as they can be placed in close proximity to the processing workpiece.

Special features:

- Wide range of applications
- Direct connection to the machines' supply voltage

Fields of application:

- Machines, production plants & assembly lines
- Vision systems

LED integrated lights

LED recessed lights provide homogeneous, flicker-free and glare-free illumination in the machine rooms of machine tools. They are used in machine cladding or as recessed installation, depending on the design. This minimises interfering edges, preventing the accumulation of chippings or the like. This makes them ideal for use in the food industry as well as for camera-supported quality monitoring.

Special features:

- Suitable for very tight installation situations, also close to the workpiece
- Direct connection to the machines' supply voltage

Fields of application:

- Machines, production plants & assembly lines
- Vision systems
- Vehicle construction





LED signal lights

In addition to illuminating large areas, signal lamps with optical displays ensure safer and more efficient processes. Integrated into the PLC control of the machine or plant system, they communicate standstill or disruption (red) and normal operation (green), among other things. Thus, with their RGB LEDs, the signal lamps realise a simple form of intelligent light, ideal for retrofitting machines or serial production systems.

Special features:

- Various options for signalling machine and system statuses
- Additional efficient, daylight white SMD LEDs (product dependent)
- Homogeneous and low-shadow illumination of large areas

Fields of application:

- Machines, production plants & assembly lines





LED mounted lights

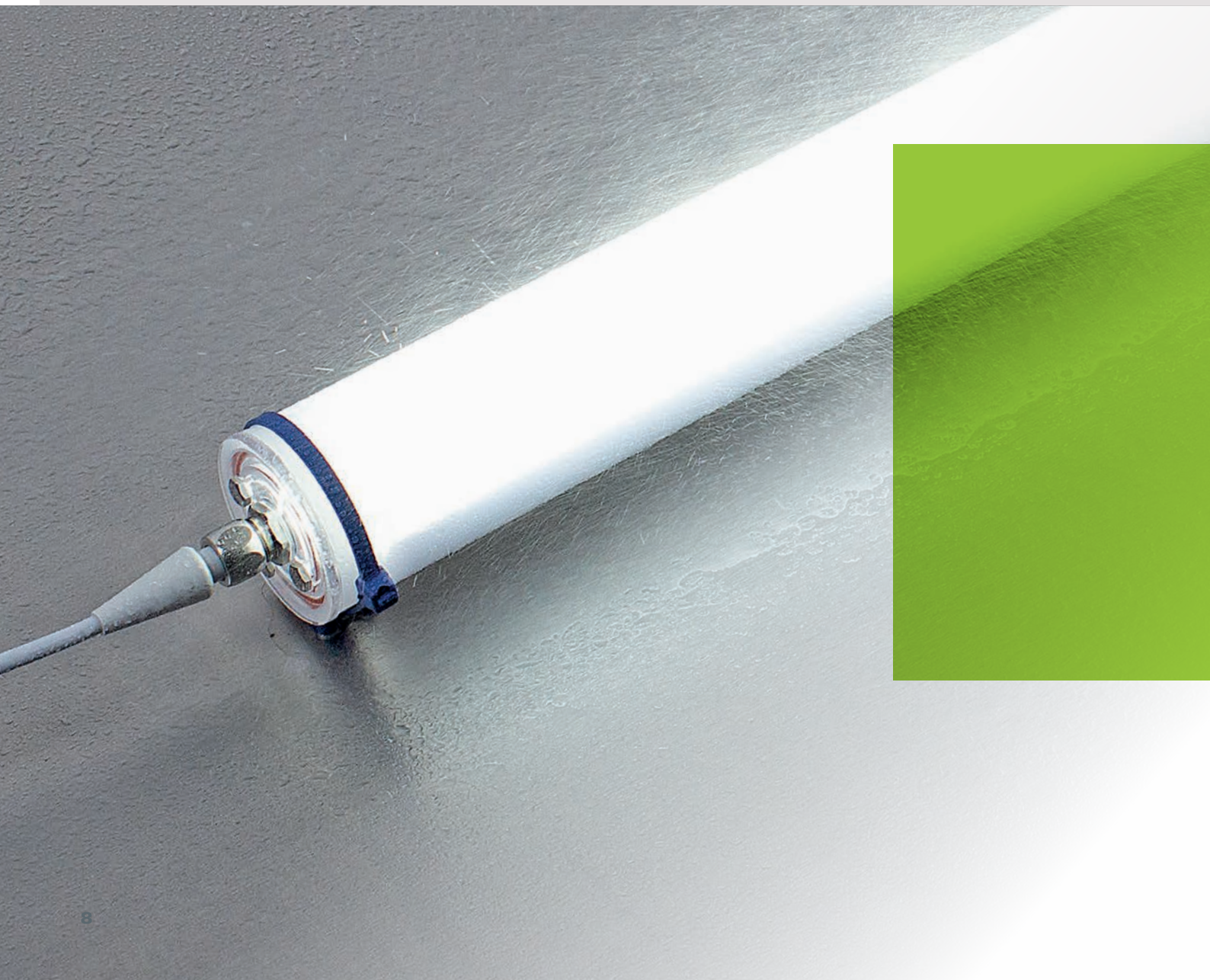
LED mounted lights for the industry are designed for use around technical systems, machines, or workstations in assembly lines. Sealed dust-tight and splash-proof, they are perfectly protected against external influences. Quick and easy installation is ensured by standardized electrical connections and variable mounting with matching luminaire holders.

Special features:

- Simple and quick assembly
- Robust housing
- Wide range of variants

Fields of application:

- Machines, production plants & assembly lines
- Wood processing machines



LED tube lights

Depending on the type of application, LED tubular lights satisfy the high hygiene requirements of food and beverage and other hygiene-sensitive industries. They are apart from being resistant to many acids and alkalis. The lights satisfy the highest levels of protection classes for the classic industrial sector. The LED tubular lights are equipped with optimum thermal management, providing excellent heat dissipation and, thus, a long service life.

Special features:

- Available in diameters of 25 mm, 50 mm and 70 mm
- According to the specifications: HACCP certified and FDA compliant materials
- Ecolab certification for the series INROLED_50 Ecolab
- Variety of different uses

Fields of application:

- Machines, production plants & assembly lines
- Food & pharmaceutical industry
- Warehouse logistics & building technology



LED industrial lighting

Robustness and versatility characterises our industrial lights. They are resistant to a variety of chemicals and splinter-free, thanks to a polycarbonate tube or well-protected by borosilicate glass. LED industrial lights are also suitable for use in industrial image processing and ID systems. They combine high illumination intensity with homogeneous, flicker-free illumination. The camera's field of vision is optimally illuminated and, if required, the lights can also be dimmed via PWM.

- Thanks to FDA-compliant materials, the lights are hygienic and safe, also making them suitable for food & beverage sectors.
- Simple retrofitting options
- Available in safety extra-low voltage or mains voltage (depending on type)

The LED2WORK product portfolio

LED WORKPLACE LIGHTING

LED FLEX ARM LIGHTS

CENALED SPOT
Flexarm



CENALED LENS
Flexarm



LED ADJUSTABLE ARM LIGHTS

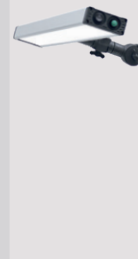
CENALED SPOT
Gelenkarm



LENSLED II



UNILED II



UNILED II
TUNABLE WHITE



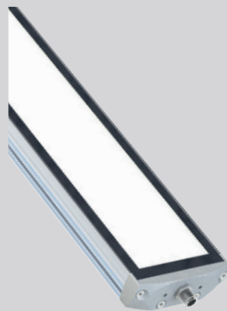
LED MACHINE LIGHTING

LED SURFACE-MOUNTED LIGHTS

CENALED SPOT
Gelenkkopf



FIELDLED EVO



LEANLED II



MIDILED



TOPLED
CENALED SPOT



TUBELED_40
Element



LED SIGNAL LIGHTS / LED HYBRID LIGHTS

INROLED_50 Ecolab
RGB-W



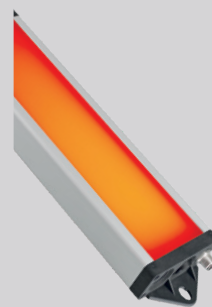
SIGNALED II RGB



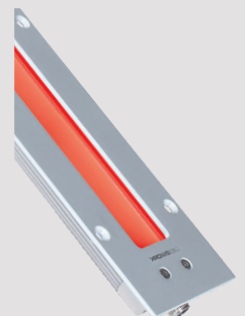
TUBELED_40 II RGB-W
TUBELED_25 RGB-W



UNILED SL RGB-W



TUBELED_40 II
Integrated RGB-W



LED SYSTEM LIGHTS



LED INTEGRATED LIGHTS



LED INDUSTRIAL LIGHTING

LED TUBE LIGHTS



We are looking forward
to your contact!

You can reach us directly:
sales@led2work.com
+49 7231 44920-10

LED2WORK
INTELLIGENCE IN LIGHT

LED2WORK GmbH
Stuttgarter Str. 13A
75179 Pforzheim | Germany
T +49 7231 44920-00
info@led2work.com



www.led2work.com
shop.led2work.com

 **Klimaneutral**
Druckprodukt
ClimatePartner.com/12518-1907-1001

