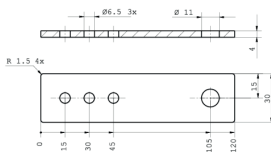
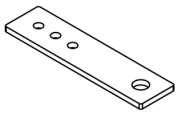
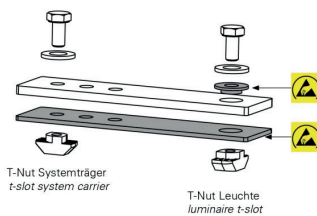


LED Zubehör
 LED accessories

 PROFILED / SYSTEMLED Montagesatz für T-Nut
 Träger, flach, mit ESD Isolation

Artikel-Nr.:	240400-01
EAN:	4260556622323

Bestell-Nr.:	240400-01
Modell:	LED2WORK Leuchtenhalterung
Anzahl:	1 Paar
Geeignet für:	SYSTEMLED, SYSTEMLED TUNABLE WHITE, PROFILED
Lieferumfang:	Halter, ESD Entkopplung, T-Nut Befestigung leuchtenseitig
Material:	Stahl / elektrostatisch dissipativer Kunststoff
Abmessungen (mm):	120 x 30 x 4
Befestigung an Leuchte:	über T-Nut Stein
Gewicht:	200 g
Besonderheit:	ESD Isolation
Anmerkung:	ohne Befestigungsmaterial am T-Nut Profil





PROFILED / SYSTEMLED mounting kit, flat, with ESD isolation

Item number: 240400-01
EAN: 4260556622323

Order number:	240400-01
Model:	LED2WORK luminaire holder
Quantity:	1 pair
Suitable for:	SYSTEMLED, SYSTEMLED TUNABLE WHITE, PROFILED
Scope of delivery:	holder, ESD decoupling, T-nut mounting luminaire-sided
Material:	steel, electrostatic, dissipative plastics
Dimensions (mm):	120 x 30 x 4
Assembling:	via t-nut
Weight (net):	200 g
Feature:	ESD isolation
Note:	without assembling material for t-slot mounting

