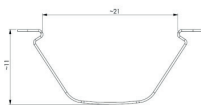
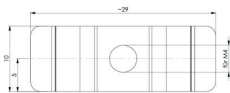


LED Zubehör  
 LED accessories

 LEANLED / SIGNALED Leuchtenhalter  
 Federklemme mit Magnet

<b>Artikel-Nr.:</b>	210200-08
<b>EAN:</b>	4260556622620
<b>Zolltarifnr.:</b>	94059900

<b>Bestellnr.:</b>	210200-08
<b>Bauform:</b>	Klemmhalter
<b>Anzahl:</b>	1 Paar
<b>Geeignet für:</b>	LEANLED, LEANLED II, SIGNALED, SIGNALED II
<b>Lieferumfang:</b>	Federklemmen mit Magnet, 2 Stück
<b>Material:</b>	Federstahl, verzinkt / Magnet
<b>Abmessungen (mm):</b>	29 x 11 x 10 (Raummaß Klemme)
<b>Befestigung an Leuchte:</b>	über Federklemme am unteren Profil
<b>Gewicht:</b>	100 g
<b>Bruttogewicht:</b>	150 g
<b>Besonderheit:</b>	schnelle, einfache Montage und Demontage
<b>Anmerkung:</b>	Untergrund muss magnetisch haftend sein





## LEANLED/SIGNALED spring clip holder with magnet

<b>Item number:</b>	210200-08
<b>EAN:</b>	4260556622620
<b>Customs tariff number:</b>	94059900

<b>Order number:</b>	210200-08
<b>Model:</b>	clamping holder
<b>Quantity:</b>	1 pair
<b>Suitable for:</b>	LEANLED, LEANLED II, SIGNALED, SIGNALED II
<b>Scope of delivery:</b>	spring clips with magnet, 2 pieces
<b>Material:</b>	spring steel, galvanized / magnet
<b>Dimensions (mm):</b>	29 x 11 x 10 (cubic measure spring clip)
<b>Assembling:</b>	about spring clip at the profile on the back
<b>Weight (net):</b>	100 g
<b>Gross weight:</b>	150 g
<b>Feature:</b>	assembling quick and easy
<b>Note:</b>	subsurface must have magnetic grip

