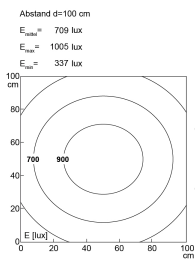
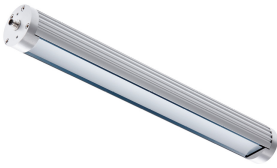
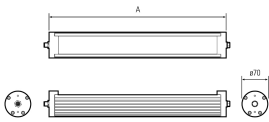


LED surface-mounted luminaire for machines



110410-12



Product-Nr.	110410-12
EAN:	4260556621418
Model:	TUBELED_70 AC
Order number:	110410-12
Model:	TUBELED_70 AC
Type:	LED surface-mounted luminaire for machines
Illuminant:	SMD LED
Total output incl. driver:	~28 W
Power consumption:	~24 W
Lamp luminous flux:	3798 lm
Lamp luminous efficiency:	~155 lm/W
Light distribution:	direct
Light colour:	daylight white (5200 - 5700K)
Connected load:	90-305V AC \pm 10%, 50-60 Hz
Power supply:	inbuilt
Connection (connector):	M12 S-coded
Degree of protection:	IP67/IP69K
Class of protection:	I
Glare control:	opal white
Beam angle (optics):	100°
Operating temperature:	-10 °C -> +50 °C (14 °F -> 122 °F)
Colour rendering (Ra):	>85
Lamps lifetime:	> 50.000 h (L80/B10)
Housing material:	aluminium
Cover material:	Safety glass, frosted, shatterproof
Height [B] x Width [C]:	Ø 70 mm (~2,76")
Length [A]:	560 mm (~22,05")
Weight (net):	2100 g (~74 oz)
Gross weight:	2550 g (~90 oz)
Risk group (DIN EN 62471):	Group 1
Markings:	CE, UKCA
Mounting accessories:	optional
Made in:	Germany
Feature:	retrofitting: standardised LED luminaire for 1:1 replacement