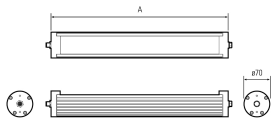
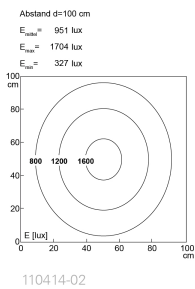
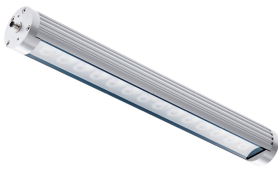


LED surface-mounted luminaire for machines



Product-Nr.	110414-02
EAN:	4260556621340
Model:	TUBELED_70 DC
Order number:	110414-02
Model:	TUBELED_70 DC
Type:	LED surface-mounted luminaire for machines
Illuminant:	High Power LED
Power consumption:	~26 W
Lamp luminous flux:	3052 lm
Lamp luminous efficiency:	ca. 116 lm/W
Light distribution:	direct
Light colour:	daylight white (5200 - 5700K)
Connected load:	24V DC \pm 10%
Connection (connector):	M12 A-coded
Degree of protection:	IP67/IP69K
Class of protection:	III
Glare control:	opal white
Beam angle (optics):	60°
Operating temperature:	-30 °C -> +70 °C (-22 °F -> 158 °F)
Colour rendering (Ra):	>80
Lamps lifetime:	> 60.000 h (L80/B10)
Housing material:	aluminium
Cover material:	Safety glass, frosted, shatterproof
Height [B] x Width [C]:	Ø 70 mm (~2,76")
Length [A]:	560 mm (~22,05")
Weight (net):	1650 g (~58 oz)
Gross weight:	2100 g (~74 oz)
Risk group (DIN EN 62471):	free group
Markings:	CE, UKCA, ETL Listed (5003529)
Dimmable:	optional via accessories
Mounting accessories:	optional
Made in:	Germany
Feature:	retrofitting: standardised LED luminaire for 1:1 replacement