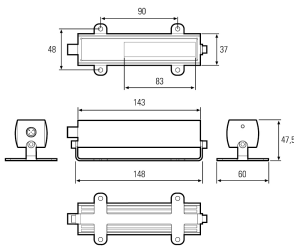
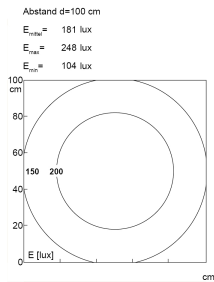
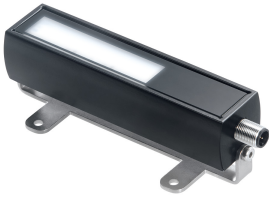


LED-Maschinenleuchte



Product-Nr.	110614-01
EAN:	4260556620886
Model:	MIDILED
Order number:	110614-01
Model:	MIDILED
Type:	LED surface-mounted luminaire
Illuminant:	SMD LED
Power consumption:	~7 W
Lamp luminous flux:	882 lm
Lamp luminous efficiency:	122 lm/W
Light distribution:	direct
Light colour:	daylight white (5200 - 5700K)
Connected load:	24 V DC
Power supply:	-
Connection (connector):	M12 A-type encoded
Degree of protection:	IP68
Class of protection:	III
Glare control:	ESG frosted, shatterproof
Beam angle (optics):	120°
Operating temperature:	-10... +40 °C (14... 104 °F)
Colour rendering (Ra):	> 80
Lamps lifetime:	> 60.000 h (L80/B10)
Housing material:	aluminium
Cover material:	safety glass frosted
Length [A]:	ca. 148 mm (~5,83")
Weight (net):	400 g (~14 oz)
Gross weight:	550 g (~19 oz)
Risk group (DIN EN 62471):	free group
Markings:	CE, UKCA
Dimmable:	via optional accessory
Mounting accessories:	holding angle in delivery scope
Made in:	Germany
Feature:	compactly built, very bright