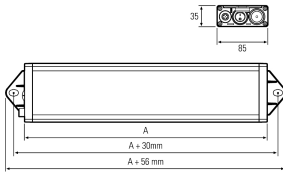
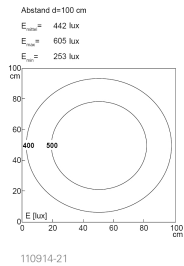
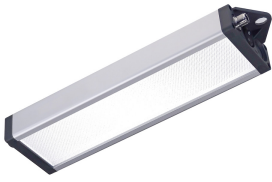


## LED-Systemleuchte



<b>Product-Nr.</b>	110914-21
<b>EAN:</b>	4260556623382
<b>Model:</b>	UNILED SL DC
<b>Order number:</b>	110914-21
<b>Model:</b>	UNILED SL DC
<b>Type:</b>	LED system light and workplace lighting
<b>Illuminant:</b>	SMD LED
<b>Power consumption:</b>	~12 W
<b>Lamp luminous flux:</b>	1899 lm
<b>Lamp luminous efficiency:</b>	~155 lm/W
<b>Light distribution:</b>	direct
<b>Light colour:</b>	daylight white (5200 - 5700K)
<b>Connected load:</b>	24V DC $\pm$ 10%
<b>Connection (connector):</b>	M12 A-type encoded
<b>Degree of protection:</b>	IP50
<b>Class of protection:</b>	III
<b>Glare control:</b>	micro prisms
<b>Beam angle (optics):</b>	100°
<b>Operating temperature:</b>	-10... +60 °C (14... 140 °F)
<b>Colour rendering (Ra):</b>	>85
<b>Lamps lifetime:</b>	> 60.000 h (L80/B10)
<b>Housing material:</b>	aluminium
<b>Cover material:</b>	micro prisms cover
<b>Height [B] x Width [C]:</b>	35 mm x 85 mm (1,38" x 3,35")
<b>Length [A]:</b>	295 mm / 325 mm (11,61" / 12,80")
<b>Weight (net):</b>	500 g (~18 oz)
<b>Gross weight:</b>	850 g (~30 oz)
<b>Risk group (DIN EN 62471):</b>	free group
<b>Markings:</b>	CE, UKCA, ETL Listed (5003529)
<b>Dimmable:</b>	via optional accessory
<b>Mounting accessories:</b>	optional
<b>Made in:</b>	Germany
<b>Feature:</b>	high light diffusion