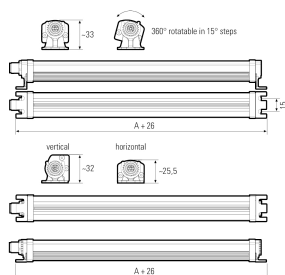
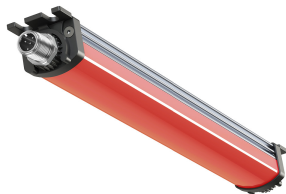


LED surface-mounted light



Product-Nr.	111090-15
EAN:	4260556624518
Model:	SIGNALLED II RGB
Order number:	111090-15
Model:	SIGNALLED II RGB
Type:	LED surface-mounted light
Illuminant:	RGB LED
Power consumption RED:	~4,24 W
Lamp luminous flux RED:	273 lm
Power consumption GREEN:	~2,96 W
Lamp luminous flux GREEN:	504 lm
Power consumption BLUE:	~4,24 W
Lamp luminous flux BLUE:	165 lm
Light distribution:	Direct
Light colour:	RGB colour space (at least 2563 colours)
Supply voltage:	24V DC - 10% +7% (RGB)
Connection (connector):	M12 A-coded
Degree of protection:	IP54
Class of protection:	III
Glare control:	opal white
Beam angle (optics):	120°
Operating temperature:	-10 °C - +50 °C (14 °F - 122 °F)
Lamps lifetime:	> 100,000 h (L80/B10)
Housing material:	aluminium
Cover material:	polycarbonate, soft
Height [B] x Width [C]:	25 mm x 30 mm (~0,98" x ~1,18")
Length [A]:	760 mm (~29,92")
Weight (net):	620 g (~22 oz)
Gross weight:	700 g (~25 oz)
Risk group (DIN EN 62471):	Free group
Markings:	CE, UKCA, ETL Listed (5003529), D mark
Dimmable:	No
Mounting accessories:	2 pairs mounting holders (holder for swivel or planar mounting) in delivery scope
Made in:	Germany
Feature:	Signalling via flashing and/or coloured light