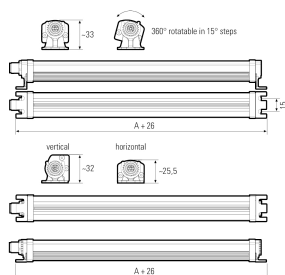
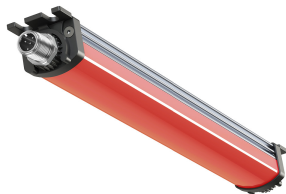


LED surface-mounted light



Product-Nr.	111090-47
EAN:	4260556626864
Model:	SIGNALLED II RGB-W
Order number:	111090-47
Model:	SIGNALLED II RGB-W
Type:	LED surface-mounted light
Power consumption white:	~43,2 W
White lamp luminous flux:	6900 lm
Lamp luminous efficiency:	159,72 lm/W
Power consumption RED:	~12,96 W
Lamp luminous flux RED:	828 lm
Power consumption GREEN:	~8,64 W
Lamp luminous flux GREEN:	1512 lm
Power consumption BLUE:	~12,96 W
Lamp luminous flux BLUE:	504 lm
Light distribution:	Direct
Light colour white:	5600K 3-step MacAdam
Connected load:	24 V DC -10 % +7 % (RGB) – 24 V DC ±10 % (W)
Connection (connector):	M12 A-coded
Degree of protection:	IP54
Class of protection:	III
Glare control:	opal white
Beam angle (optics):	120°
Operating temperature:	-10 °C - +50 °C (14 °F - 122 °F)
Lamps lifetime:	> 100,000 h (L80/B10)
Housing material:	aluminium
Cover material:	polycarbonate, soft
Height [B] x Width [C]:	25 mm x 30 mm (~0,98" x ~1,18")
Length [A]:	1520 mm (~59,84")
Weight (net):	1050 g (~37 oz)
Gross weight:	1450 g (~51 oz)
Risk group (DIN EN 62471):	Free group
Markings:	CE, UKCA, ETL Listed (5003529), D mark
Dimmable:	No
Mounting accessories:	2 pairs mounting holders (holder for swivel or planar mounting) in delivery scope
Made in:	Germany