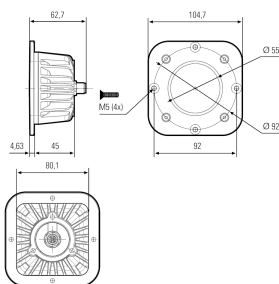
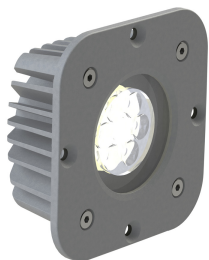


LED Maschinenleuchte



| | |
|-----------------------------------|--|
| Product-Nr. | 121011-05 |
| EAN: | 4260556625744 |
| Model: | CENALED SPOT Einbau |
| Order number: | 121011-05 |
| Model: | CENALED SPOT Einbau |
| Type: | LED recessed light |
| Illuminant: | High Power LED |
| Power consumption: | ~8,5 W |
| Lamp luminous flux: | 1120 lm |
| Lamp luminous efficiency: | 134 lm/W |
| Light distribution: | direct |
| Light colour: | neutral white (5000K) |
| Connected load: | 24V DC ± 10% |
| Degree of protection: | IP67 |
| Class of protection: | III |
| Beam angle (optics): | 15° |
| Operating temperature: | -10... +50 °C (14... 122 °F) |
| Colour rendering (Ra): | >80 |
| Lamps lifetime: | > 60.000 h (L80/B10) |
| Housing material: | aluminium (powder-coated) |
| Cover material: | safety glass 4 mm (0,16"), crack-resistant |
| Height [B] x Width [C]: | installation body: ~80 mm x 80 mm (~3,15" x 3,15"), installation depth >60 mm (>2,36"), cover ~105 mm x 105 mm, ~5 mm (~4,13" x 4,13" x 0,2") built-up |
| Weight (net): | 450 g (~16 oz) |
| Gross weight: | 550 g (~19 oz) |
| Risk group (DIN EN 62471): | free group |
| Markings: | CE, UKCA, ETL Listed (5003526) |
| Dimmable: | optional via accessories |
| Made in: | Germany |
| Feature: | 15° optics for spotlight |
| Note: | seal included in delivery; fastening via 4 countersunk bolts M5 |