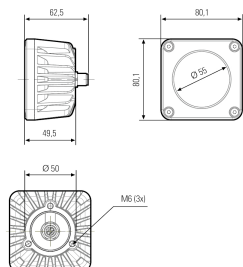
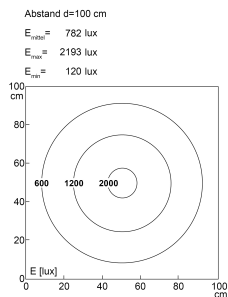
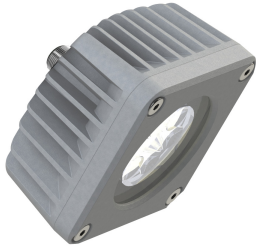


LED Maschinenleuchte



| | |
|-----------------------------------|--|
| Product-Nr. | 121012-04 |
| EAN: | 4260556625720 |
| Model: | CENALED SPOT Aufbau |
| Order number: | 121012-04 |
| Model: | CENALED SPOT Aufbau |
| Type: | surface-mounted LED light |
| Illuminant: | High Power LED |
| Power consumption: | ~8,5 W |
| Lamp luminous flux: | 1120 lm |
| Lamp luminous efficiency: | 134 lm/W |
| Light distribution: | direct |
| Light colour: | neutral white (5000K) |
| Connected load: | 24V DC \pm 10% |
| Connection (connector): | M12 A-coded |
| Degree of protection: | IP67 |
| Class of protection: | III |
| Beam angle (optics): | 30° |
| Operating temperature: | -10... +50 °C (14... 122 °F) |
| Colour rendering (Ra): | >80 |
| Lamps lifetime: | > 60.000 h (L80/B10) |
| Housing material: | aluminium (powder-coated) |
| Cover material: | safety glass 4 mm (0,16"), crack-resistant |
| Height [B] x Width [C]: | cubic measure: ~80 mm x 80 mm x 62.5 mm (~3,15 x 3,15 x 2,46") |
| Weight (net): | 400 g (~14 oz) |
| Gross weight: | 500 g (~18 oz) |
| Risk group (DIN EN 62471): | free group |
| Markings: | CE, UKCA, ETL Listed (5003526) |
| Dimmable: | optional via accessories |
| Mounting accessories: | articulated joint 214300-01 as holder optional |
| Made in: | Germany |
| Feature: | 30° optics for flat light |
| Note: | seal included; mounting: 3x M6 screws at rear |