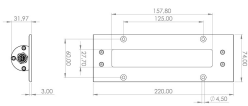


LED-Maschinenleuchte



TUBELED_40 II Integrated 151010-01

Product-Nr.	151010-01
EAN:	4260556623948
Model:	TUBELED_40 II Integrated
Order number:	151010-01
Model:	TUBELED_40 II Integrated
Type:	LED recessed luminaire
Illuminant:	SMD LED
Power consumption:	~8 W
Lamp luminous flux:	1266 lm
Lamp luminous efficiency:	~155 lm/W
Light distribution:	Light Forming Technology
Light colour:	daylight white (5200 - 5700K)
Connected load:	24V DC \pm 10%
Connection (connector):	M12 A-type encoded
Degree of protection:	IP67/IP69K
Class of protection:	III
Glare control:	diffused safety glass
Beam angle (optics):	100°
Operating temperature:	-30... +60 °C (-22... 140 °F)
Colour rendering (Ra):	> 85
Lamps lifetime:	> 60.000 h (L80/B10)
Housing material:	Aluminium
Cover material:	safety glass, 4 mm (0,16")
Height [B] x Width [C]:	32 mm x 74 mm (1,26" x 2,91"), Cover plate 3 mm (0,12") externally
Length [A]:	220 mm (8,66")
Weight (net):	450 g (~16 oz)
Gross weight:	700 g (~25 oz)
Risk group (DIN EN 62471):	Free group
Dimmable:	via optional accessory
Made in:	Germany