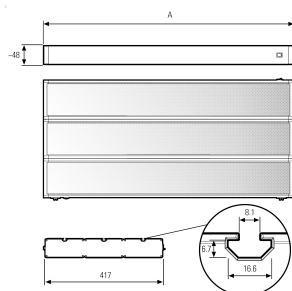
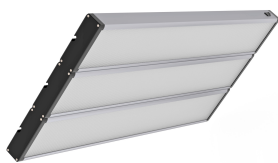


## LED system light



<b>Product-Nr.</b>	155770-01
<b>EAN:</b>	4260556628271
<b>Model:</b>	SYSTEMLED SurfaceOne - 6.5-4-6.5

Order number:	155770-01
<b>Model:</b>	SYSTEMLED SurfaceOne - 6.5-4-6.5
Type:	LED system light
Illuminant:	SMD LED
Total output incl. driver:	~94 W
Power consumption:	~86,4 W
Lamp luminous flux:	14575 lm
Lamp luminous efficiency:	169 lm/W
Light distribution:	Direct
Light colour:	4000K + 6500K, 3-Step-McAdam
R9:	90
Colour rendering (Ra):	>90 (typ. 95)
UGR:	< 22
Connected load:	120-277V AC ± 10%, 50-60 Hz
Power supply:	Integrated
Connection (connector):	Wieland GST18
Degree of protection:	IP40
Class of protection:	I
Glare control:	Microprisms
Beam angle (optics):	90°
Operating temperature:	-10 °C - +45 °C (14 °F - 113 °F)
Storage temperature:	-20 °C - +80 °C (-4 °F - 176 °F)
Lamps lifetime:	> 100,000 h (L80/B10)
Housing material:	aluminum and PMMA
Height [B] x Width [C]:	48 mm x 417 mm (~1,89" x ~16,42")
Length [A]:	1120 mm (~44,09")
Mounting:	T-nut, rear side (slot 8)
Weight (net):	9652 g (~340 oz)
Gross weight:	14152 g (~499 oz)
Risk group (DIN EN 62471):	Free group
Markings:	CE, UKCA
Dimmable:	Driver included in the delivery scope
PWM frequency:	~4,9kHz
Mounting accessories:	Optional
Made in:	Germany
Feature:	externally dimmable/switchable